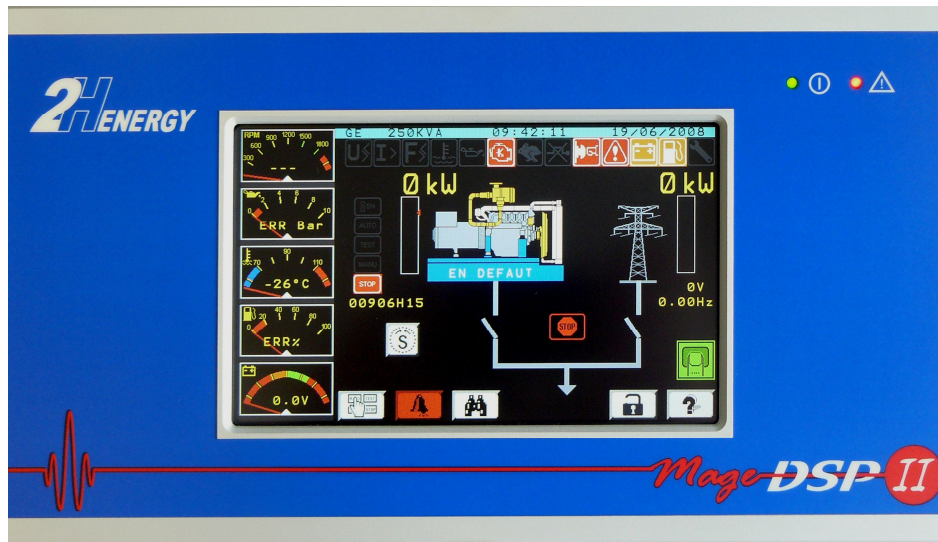


GENSET CONTROL UNIT



MAGE DSP II

GENSET AND POWER PLANT CONTROL UNIT

MAGE DSP II is dedicated to the genset's control. Emerging from the first generation of numerical automatism MAGE DSP and using the latest industrial numerical technologies, it gives new advantages:

- ✦ Ease of use thanks to color display,
- ✦ Compact, only one set to have information and interface user/machine,
- ✦ More functions with especially graphic records,
- ✦ More possibilities for connections (port Ethernet),
- ✦ Large reliability: less components and connections.

MAIN FUNCTIONS

- Genset start-up management,
- Faults monitoring and alarm,
- Change over management,
- Mains monitoring,
- Synchronization, coupling / load sharing,
- Power plant unit management (until 16 gensets),
- Genset state and measurement display,
- Display thanks to moving synoptics,
- Synchronoscope integrated.
- Graph display (such as galvanometers),
- Event log of the last 512 events,
- Historical display by graphic curves,
- Communication with others systems,
- More than 20 serial configurations basically available,
- Customized display and automatism (option),
- 4 serial language : F, GB, I, DE.

TECHNOLOGIES

- Processor ARM : 32 bit (200MHz), this power allows more functions,
- Colors display: high definition allows a large comfort. High contrast thanks to TFT technology and white LED,
- Ports of communication: RS232, RS485, CAN, USB, Ethernet,
- Configuration, parameters, and events recorded on removable SD-Card memory,
- Current measurement with Hall effect sensor.



2H ENERGY

Parc d'Activités des Hautes Falaises – St Léonard
76400 FECAMP

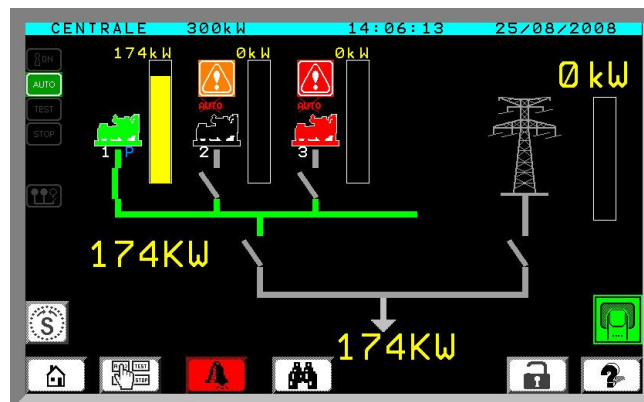
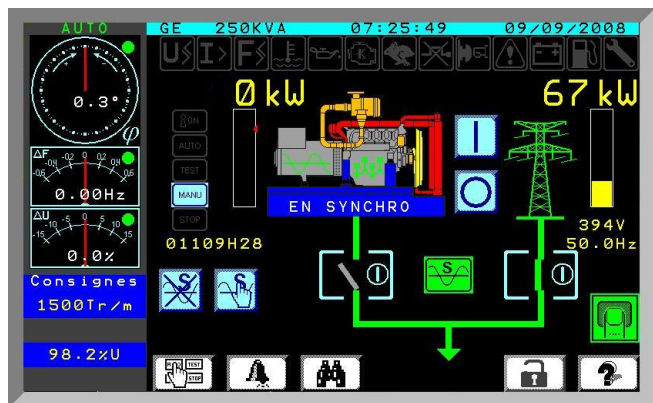
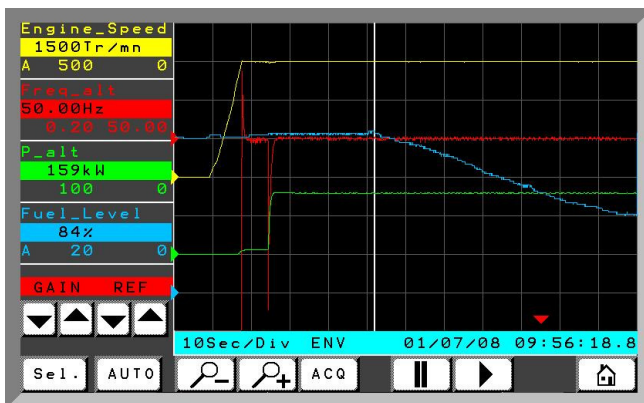
Tél : +33 (0)2.35.10.68.00 Fax : +33 (0)2.35.10.68.10
contact.2he@fptindustrial.com <http://2henergy.fptindustrial.com/>



GENSET CONTROL UNIT

CHARACTERISTICS

- Power supply DC 8-36V, 12W typical, 21W max
- 20 inputs on/off
- 16 outputs for relay command
- 8 analogical inputs :
 - 5 resistance measurements (engine sensor)
 - Battery voltage measurement
 - +/- 10V measurement
 - +/- 100mV measurement
- 2 isolated analogical outputs :
 - +/- 5V or 0-10V
 - Speed regulator monitoring
 - Voltage regulator monitoring
- Magnetic sensor input
- 2 alternative circuits measurement :
 - Alternator and mains circuit (bus-bar)
 - 3 phases voltage measurement with or without neutral (max 350V)
 - Frequency measurement: 10 to 500Hz
 - Intensity 3 phases (TI 5A) measurement
 - Active, reactive, apparent power, power factor
 - Phase displacement and harmonic content calculation
- 2 communication ports CAN 250kBit/s:
 - Interface with external inputs/outputs (CanOpen)
 - Dialog with engine (SAE-J1939)
 - Interface between gensets
- 2 serial communication ports :
 - RS232 until 38400bauds - MODBUS
 - RS485 until 38400bauds - MODBUS
- Port USB (serial port MODBUS)
- Port Ethernet 10BT :
 - MODBUS TCP server
 - Communication with a second module for remote visualization
 - Visualization on PC
- Display :
 - LCD TFT 7 inches
 - 800 X 480 pixels
 - Lighting with white Leds
 - Touch screen
- Dimensions: 300 X 170 X 49mm
- Operating temperature : -33°C to +70°C
- Storage temperature : -40°C to +80°C
- Vibration carriage : 2g from 2Hz to 100Hz
- IP65 protection of front face (option)
- CEM : conformity CE N°89/336
 - Emission: EN 50081-1 et EN 55022 class B
 - Immunity : EN 50082-2, EN 610003 10V/m, EN 61000-4-6 (10V), EN 61000-4-4, EN 61000-4-2 and EN61000-4-8 (30A/m)





2H ENERGY

Parc d'Activités des Hautes Falaises – St Léonard
76400 FECAMP

Tél : +33 (0)2.35.10.68.00 Fax : +33 (0)2.35.10.68.10
contact.2he@fptindustrial.com http://2henergy.fptindustrial.com/

